

# CATIFA 46

---



arper

**Catifa 46 is the little sister of Catifa 53. Same sleek profile with a crisp, casual efficiency that is designed for contract use and spaces that require a slightly smaller scale. Extremely flexible, Catifa 46 extends the palette of finishes, bases and accessories for customization to accommodate an almost limitless array of contract applications without altering its essential character. Made for both residential and contract use, indoors and out, the Catifa 46 shell and base are fabricated in a diverse range of materials, colors and finishes. The shell is constructed in double-curved plywood, mono- or bi-color polypropylene (an exclusive process pioneered by Arper), covered in leather or fabric or finished with upholstered pads. The base comes in chrome-finish steel, satin-finish stainless steel, aluminum or powder-coated aluminum and is available in the following base configurations: sled, four-legs in tube, aluminum trestle and five-ways. The sled and four-leg bases are stackable to allow for large-scale use and storage. A table accessory is available for campus or auditorium use. Catifa 46 is also available as a stool.**

arper



### Designer

Lievore Altherr Molina

Lievore Altherr Molina was founded by Alberto Lievore, Jeannette Altherr and Manuel Molina in 1991. Their humanist design approach is informed by the fundamental desire for pure, beautiful forms derived from the constraints of function, technology and context. Distinguished by a multi-disciplinary method that engages furniture, interior, product, and package design, their work has been globally exhibited and acknowledged. They are the recipients of the prestigious National Design Award (1999) in Spain where they practice and teach extensively.

### Awards

- ICFE Editors Awards 2010, USA
- The Office Awards 2010, UAE
- Design Week Award 2005, UK
- Red Dot award 2006, Germany

### Applications

- Home
- Cantine
- Cafeteria
- Restaurant
- Office
- Auditorium
- Campus
- Library
- Board room
- Conference
- Break-out area
- Waiting room

# Catifa 46



arper

T +39 0422 7918 F +39 0422 791800

www.arper.com



1



2



3



4

**1 Einbau Mensa Kantonsschule, Wettingen, Switzerland**  
**Art. 0251**  
 Four-leg base in chromed steel & polypropylene shell.

**2 Private residence**  
**Art. 0572**  
 Sled base in chromed steel & wood shell.

**3 Gardiner Museum, Toronto, Canada**  
**Art. 0571, Art. 0378**  
 Sled base in chromed steel & wood shell.

**4 Gazzetta di Mantova, Mantova, Italy**  
**Art. 0287 con Art. 0264**  
 Sled base in chromed steel & polypropylene shell with writing table



1



**1 Private residence**  
**Art. 0251**  
 Four-leg base in chromed steel & polypropylene shell.

**2 Syzygy Agency, Hamburg, Germany**  
**Art. 0462**  
 Trestle base in chromed steel & front face upholstery in fabric.

**3 Foscarini Head Office, Marcon, Venezia, Italy**  
**Art. 0278 custom product**  
 Sled base in chromed steel & polypropylene shell.

**4 Museo d'Arte Moderna Ugo Carà, Muggia, Trieste, Italy**  
**Art. 0251**  
 Four-leg base in chromed steel & polypropylene shell.

**5 Restaurant Werd, Zürich, Switzerland**  
**Art. 0251**  
 Four-leg base in chromed steel & polypropylene shell.

3



4



5



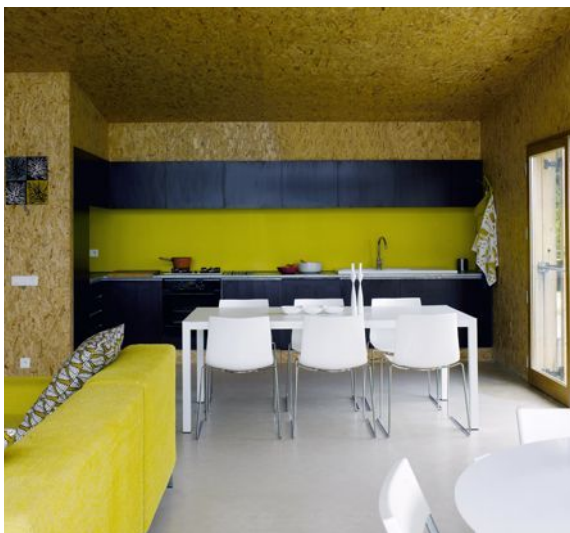


**1 Peugeot, Glostrup, Denmark**  
**Art. 0378**  
Sled base in chromed steel  
& wood shell

**2 Private residence**  
**Art. 2878**  
Sled base in chromed steel  
& polypropylene shell.

**3 Private residence, Petit Bayle, France**  
**Art. 0278**  
Sled base in chromed steel  
& polypropylene shell.

**4 Private residence, Petit Bayle, France**  
**Art. 0278**  
Sled base in chromed steel  
& polypropylene shell





1



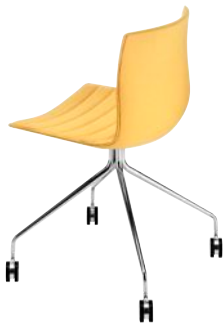
2



3



4



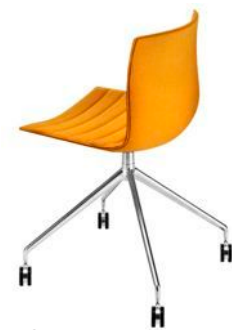
5



6



7



8



9



10



11



12

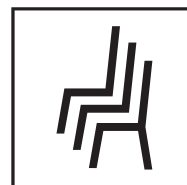


13

Chair

- 1 4 Legs
- 2 Sled
- 3 Technical Sled
- 4 Trestle swivel
- 5 Trestle fixed
- 6 Aluminum trestle swivel base
- 7 Aluminium trestle fixed base
- 8 5 ways steel
- 9 5 ways aluminum

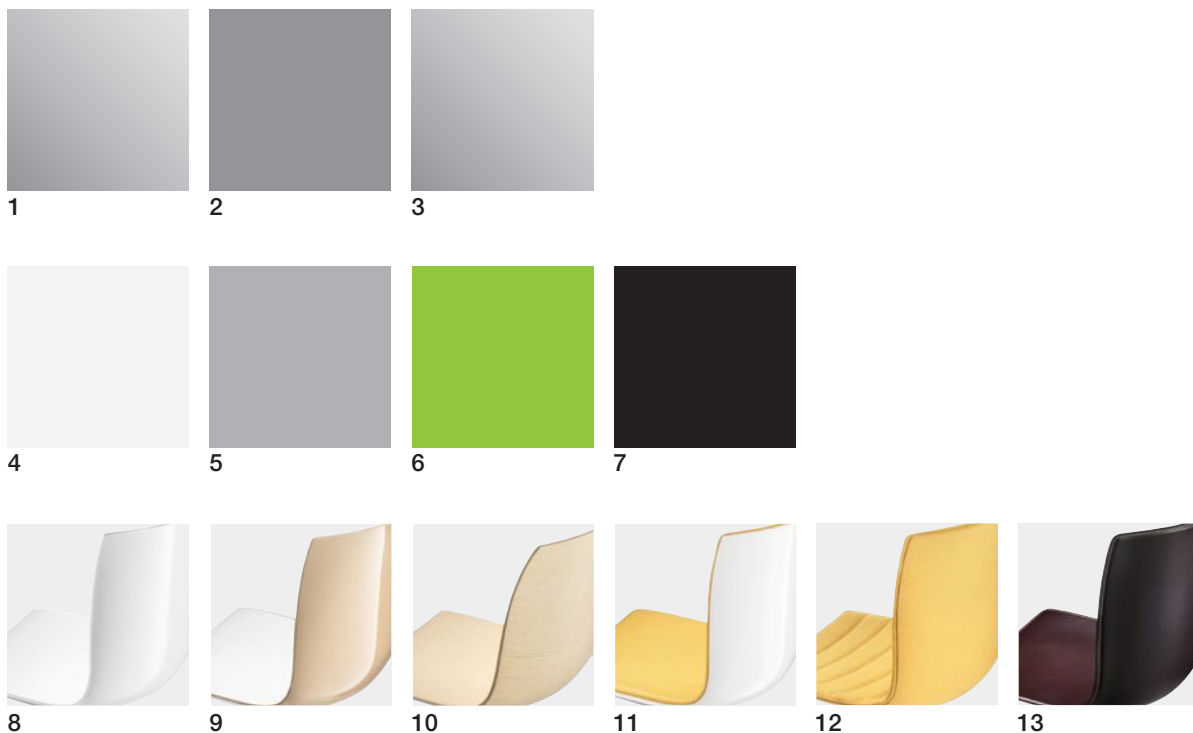
- 10 Counter stool
- 11 Bar stool
- 12 Counter stool
- 13 Bar stool



Stackable chair

- 1 4 Legs
- 2 Sled
- 3 Technical sled
- 10 Counter stool
- 11 Bar stool





arper

## Base Finishes

- 1 CRO Chrome finish steel
- 2 S03 Brushed stainless steel
- 3 LU1 Shiny Aluminium
- 4 V12 White Lacquered matt
- 5 V41 Grey Lacquered semi-matt (only steel)
- 6 V37 Green Lacquered glossy (only steel)
- 7 V39 Black Laquered matt

## Seat Finishes

- 8 Polypropylene one colour
- 9 Polypropylene bicolor
- 10 Wood
- 11 Polypropylene with frontal upholstered
- 12 Upholstered fabric, soft leather, aux leather
- 13 Upholstered hard leather

T +39 0422 7918 F +39 0422 791800



## Outdoor

- 2 S03 Brushed stainless steel
- 4 V12 White Lacquered matt
- 5 V41 Grey Lacquered semi-matt (only steel)
- 6 V37 Green Lacquered glossy (only steel)
- 7 V39 Black Laquered matt
- 8 Polypropylene one colour
- 9 Polypropylene bicolor

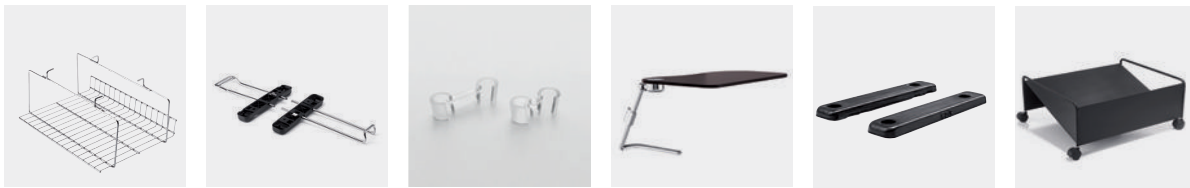




1 2 3 4



5 6 7 8 9 10



11 12 13 14 15 16



17 18 19

- |    |  |    |                                  |
|----|--|----|----------------------------------|
| 1  | Armrest                                      | 11 | Basket                           |
| 2  | Armrest with polypropylene one color pad     | 12 | Link                             |
| 3  | Armrest upholstered pad                      | 13 | Removable link                   |
| 4  | Cushion                                      | 14 | Writing table                    |
| 5  | Set of glides                                | 15 | Staking glide                    |
| 6  | Polycarbonate glide with polyurethane insert | 16 | Trolley                          |
| 7  | Polycarbonate glide with felt insert         | 17 | Stackable                        |
| 8  | Chrome castors                               | 18 | Stacking protection pad          |
| 9  | White castors                                | 19 | Stacking protection pad and link |
| 10 | Black castors                                |    |                                  |

---

**Step 1**                    **Pick a base.**  
                                 **Then a finish for your base.**

---

**Step 2**                    **Pick a shell.**  
                                 **Then a finish for your shell.**

---

**Step 3**                    **Pick a colour.**

---

**Step 4**                    **Add options as needed.**

---

**Step 5**                    **Add accessories as needed.**

---

arper

T +39 0422 7918    F +39 0422 791800

Environmental Product Certification



ARP-2009  
GECA 28-2006 - Furniture and Fitting

[epd-norge.no](http://epd-norge.no)

[www.epd-norge.no](http://www.epd-norge.no)

Environmental Product Declaration (EPD)  
obtained according to the Norwegian system  
— Artt. 0251, 0257