

**louis
poulsen**

hive



www.hivemodern.com

PH 3/2 Glass Table

table & floor

louis
poulsen



Design

Poul Henningsen

Concept

PH 3/2 Glass Table (1927) provides a soft illumination. PH 3/2 is based on the principle of a reflecting multi-shade system, creating a harmonious and glare free illumination. The shades are drawn over a logarithmic spiral, with the center of the light source placed in the spiral's focal point.

Finish

White opal glass. High lustre chrome plated.

Material

Base: High lustre chrome plated, brass. Shades: Handblown white opal glass. Top plate: High lustre chrome plated, spun brass. Stem: High lustre chrome plated, brass.

Mounting

Cord type: Black. Cord length: 9'. Switch: In-line on/off switch provided.

Weight

Max. 6 lbs.

Label

cUL, Dry location. IBEW.



Product code	Light source	Voltage	Finish
PH3/2-T	1/60W/G16.5/IF candelabra	120V	GLASS

Info notes:

1. All handblown opal glass shades are sandblasted on the undersides for uniform light distribution.

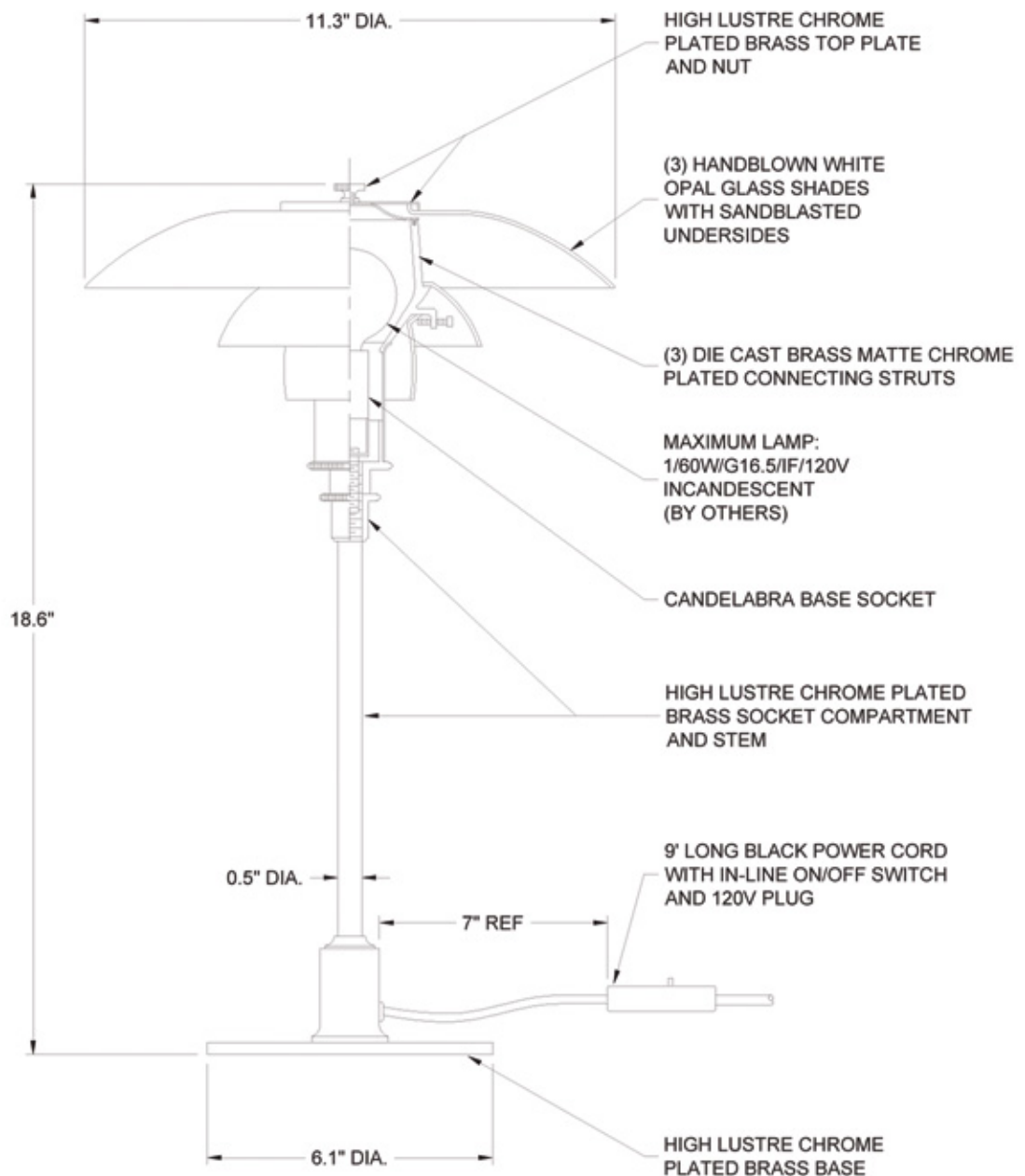


www.hivemodern.com

PH 3/2 Glass Table

incandescent

Design: Poul Henningsen





AC Martin Partners
Los Angeles, California, USA
Architect
AC Martin Partners
Photo
Thomas Loof Photography