

ASTON



arper

Aston

Strong and decisive, Aston sits at the head of the table. Defying the conventions of the typical boardroom chair or executive lounge, its linear profile and aerodynamic lines are engineered for comfort and performance. With mechanics sheathed in its sleek form, Aston is ergonomic yet light, making it perfect for both home and work. Especially designed for work environments and applications, Aston is available in three different back heights – Conference, Office and Direction – covered in leather or fabric in a wide range of colors. All models are available in four-way base with swivel mechanism, automatic seat repositioning mechanism and tilt adjustment or five-way base with castors and height-adjustment mechanism. The Conference model is available in four-leg base or cantilever chrome base. The Office and Direction models are offered with a synchronized adjustment. The Aston Lounge features a four-way base with a swivel mechanism or an automatic seat repositioning mechanism. Designed especially for waiting and lounge areas, the Aston Lounge has an upholstered footrest and side table.

arper



Designer

Jean-Marie Massaud

A multi-disciplinary practice devoted to brand, architecture, industrial and furniture design, Studio Massaud was founded in 1996 by Jean-Marie Massaud and Daniel Pouzet. Massaud's aesthetic is characterized by the quest for synthesis, lightness, and transparency and the reduction of the superfluous. The studio is an incubator for visual ideas that explore the delicate balance between the physical environment and the economic realities of contemporary experience. Studio Massaud is the author of many of our collections such as Aston, Sean, Fred and Ginger.

Awards

— Interior Innovation Award 2011, Germany (Aston Syncro)

Applications

— Home
— Office
— Lounge
— Library
— Boardroom
— Waiting room

Aston



arper

T +39 0422 7918 F +39 0422 791800

www.arper.com



1

1 Art. 1924 Direction
Five way base in polished aluminum
& soft leather upholstered seat.



2

2 Jewellery shop interior
Art. 1931 Conference
Cantilever base in chromed stainless steel
& soft leather upholstered seat.

**3 Seminarhaus Netzwerk,
Töning am Inn, Germany**
Art. 1923 Direction
Four way base in polished aluminum
& soft leather upholstered shell.

3





1

arper



2

1 Rio Tinto, London, UK
Art. 1920 Lounge
Four way base in polished aluminum
& fabric upholstered seat.

2 Private residence
Art. 1920 Lounge, Art. 1902
Four way base in polished aluminum
& fabric upholstered seat.

T +39 0422 7918 F +39 0422 791800

www.arper.com



1

arper

2

1 AMB Generali, Köln / Germany
Art. 1920 Conference
 Four way swivel base in polished aluminium & soft leather upholstered seat

2 Private residence
Art. 1920 Lounge
 Four way base in polished aluminum & fabric upholstered seat.
Art. 1903
 Polished aluminium base & lacquered MDF top.



T +39 0422 7918 F +39 0422 791800

www.arper.com

Type

Aston



1



2



3



4



5



6



7



8



9



10



11



12

arper

Armchair

- | | | | |
|---|---------------|----|---------------|
| 1 | Cantilever | 8 | 5 ways syncro |
| 2 | 4 ways swivel | 9 | 5 ways syncro |
| 3 | 4 ways swivel | 10 | Lounge |
| 4 | 4 ways swivel | 11 | Footrest |
| 5 | 5 ways | 12 | Table |
| 6 | 5 ways | | |
| 7 | 5 ways | | |

T +39 0422 7918 F +39 0422 791800

www.arper.com



1



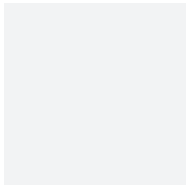
2



3



4



5



6

arper

Base finishes

- 1 CRO Chrome finish steel
- 2 LU1 Polished aluminum

Top on MDF

- 5 M03 White shiny lacquered
- 6 M29 Black shiny lacquered

Seat finishes

- 3 Fabric upholstered
- 4 Soft leather or faux leather upholstered



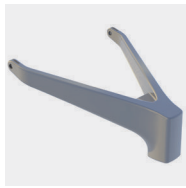
1



2



3



4



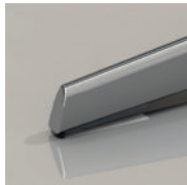
5



6



7



8

- | | | | |
|---|--------------------------------|---|-------------------------------|
| 1 | Syncro mechanism | 6 | Glide for wooden floor |
| 2 | Chrome spring | 7 | Glide for carpets |
| 3 | Red spring | 8 | Glide for other type of floor |
| 4 | Polished aluminum seat support | | |
| 5 | Polished aluminum seat support | | |

Step 1 **Pick a base.**
 Then a finish for your base.

Step 2 **Then a finish for your shell.**

Step 3 **Pick a colour.**

Step 4 **Add accessories as needed.**

Environmental Product Certification

